



First Nations Accounting Software

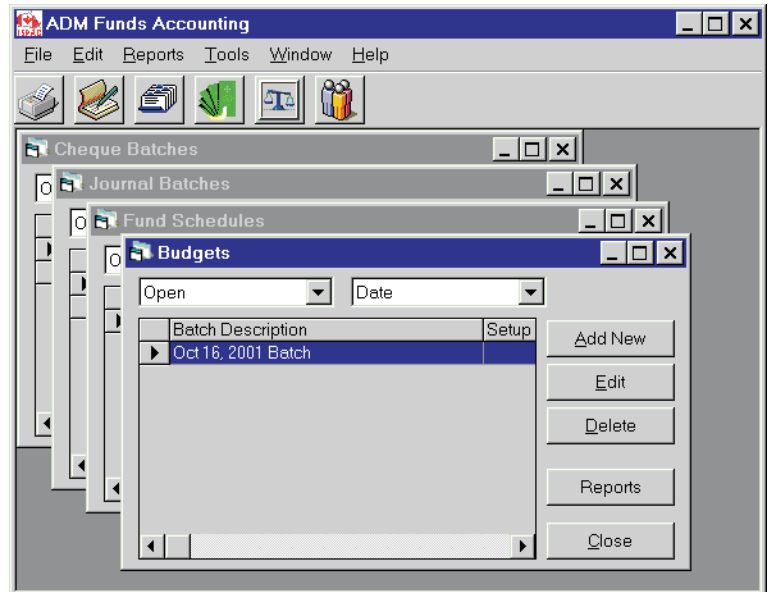
First Nations Accounting Software

Overview

This multi-user Windows accounting software contains 5 modules in 1:

- A Cheque Writer Module
- A General Ledger - Journal Entry Module
- A Funding Schedule Module
- A Budgeting Module
- A Reporting Module

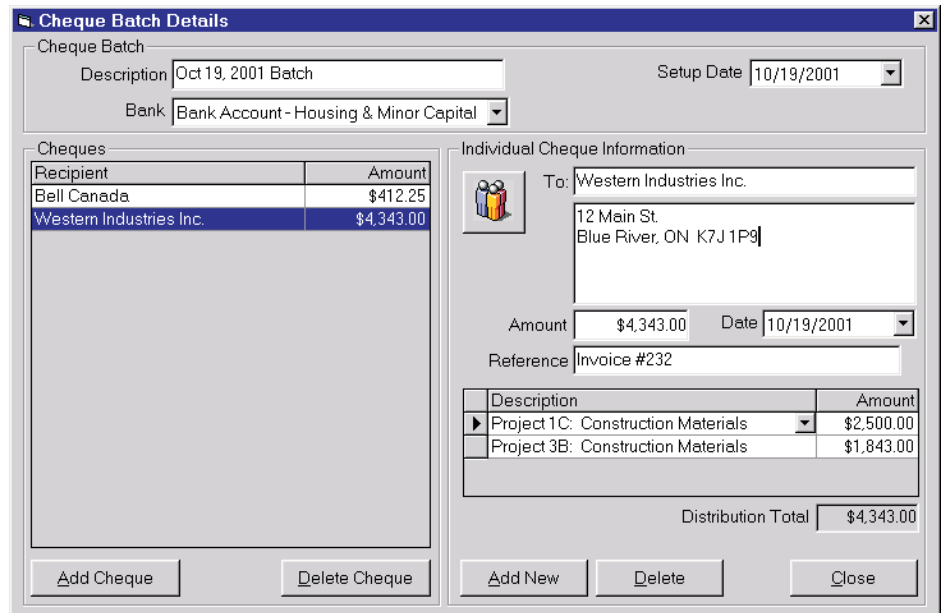
First Nations Accounting Software can also be Integrated with FoxPay Payroll Software.



All functions have a simple and intuitive design

Cheque Writer Module

- Straight forward and easy-to-use
- Allows for multiple distributions using the Program/Account selector
- Issue cheques from an unlimited number of bank accounts
- Select a payee from a Contact Database (grouped by organizations and individuals) or use an optional custom link to your own database



Cheque Writer Entry Screen

First Nations Accounting

General Ledger - Journal Entry

- Simple journal entry screen
- Multiple open batches
- All batches may be viewed after posting - they are not lost at year-end
- Various journal entry report options are available

Journal Batch Details

Journal Entry Description
 Description: Direct Bank Charges Setup Date: 08/20/2001
 Post Date: 08/20/2001

Journal Entry Distribution

Description	Reference	Debit	Credit
Power Authority: Bank Charges	Aug Statement	\$19.00	
Band Support: Bank Charges	Aug Statement	\$19.00	
Economic Development: Bank Charges	Aug Statement	\$28.00	
Bank Account - Administration (Band Support)	Aug Statement		\$66.00
Debit/Credit Totals:		\$66.00	\$66.00
Balance:			\$0.00

Buttons: Add New, Delete, Close

Select an Account

Account: Expenditures

- Administrative Expenses
- Administrative Salaries
- Audit Services
- Bank Charges
- Brighter Futures Programs
- Building Maintenance
- Building Maintenance - Band Office
- Chief & Council Travel
- Chief and Council honoraria
- Community Festivals
- construction
- Construction Materials**
- Consulting Services
- Council Expenses
- Electricition -
- Employee benefits
- Engineering Services

Program:

- Homemakers
- Major Capital - Plumbing Retrofits
- Major Capital - School Site Upgrade
- Major Capital - Water & Sewer
- Major Capital- Electrification
- Major Capital-Business Centre
- Minor Capital - Winter Road
- Minor Capital - Housing
- Minor Capital - Housing Renovations
- MNDM - Winter Road
- MTO Remote Airport
- National Health & Welfare
- NNADAP
- Northern Store
- Power Authority
- Program Unknown
- Project 1C**

Buttons: Accounts..., Programs..., Cancel, Select

Account Distribution

A consistent Program/Account selector screen is used for both the Cheque Writer and Journal Entry modules. Programs and accounts may be added as you go. There is no limit to the number of programs or accounts that may be added.

Budgeting

An unlimited number of budgets can be maintained. The software is able to generate the budget details automatically or you may enter the budget details manually.

Budget Schedule Details

Budget Information
 Budget Description: Capital Projects Budget 2001
 Start Date: Apr 2001

Description	All Months	Apr '01	May '01	Jun '01	Jul '01
Capital Projects - Business Center Project: Construction		8000	3200	1600	8000
Capital Projects - Business Center Project: Consulting Services		1200	0	0	0
Capital Projects - Business Center Project: Engineering Services		600	600	600	600
Capital Projects - Business Center Project: Miscellaneous Expense		250	250	250	250
Capital Projects - Business Center Project: Wages Expense		1685	4500	3800	4500

Buttons: Add New, Delete, Generate, Close

First Nations Accounting

Funding Schedules

- An unlimited number of funding schedules can be maintained. These schedules are posted automatically as the scheduled payments occur and may be revised at any time during the current year.

Description	Bank Account	All Months	Apr '01	May '01	Jun '01	Jul '01	Aug	Sep '01
Band Support: INAC	MAJOR CAPITAL P		5000	80000	5000	4500	5000	75000

Reporting

- Various cheque batch reports
- Funding reports
- Journal entry posting reports
- Budgeting reports - variance vs. actual
- Revenue and expense reports by program
- Balance sheets
- End User Report Writer option can be used to change the design of the reports
- All reports can be exported as an Excel spreadsheet or generated as an Adobe PDF file

	Apr	May	Jun	Jul	Aug	Sep
ADM Funds: Revenue and Expenditure						
Capital Projects - Plumbing Retrofit						
Revenue/Funds						
INAC	10,000	80,000	5,000	4,500	5,000	75,000
Totals:	10,000	80,000	5,000	4,500	5,000	75,000
Expenditures						
Building Maintenance					3,272	4,590
Construction			230,707	323,532	15,907	
Construction Materials						33,747